

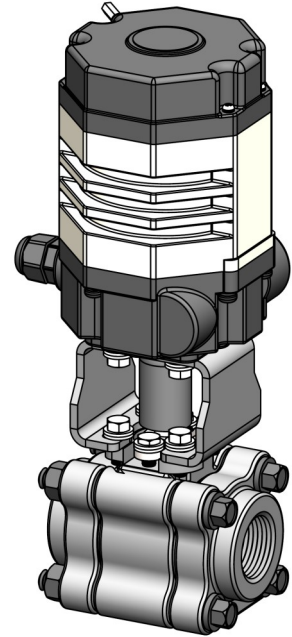


Chlorine Ball Valves Electrically Actuated

The chlorine ball valves use an electric actuator; a geared motor that provides rotary output to power the rotary valve. Motion is achieved through the application of 120, 220 VAC or 24 VDC supply voltage. Rotary action is controlled through two limit switches (one for open and one for closed) located in the unit and in conjunction with two cams. Precise setting of either position is achieved by adjusting the cam to activate the switch at exactly the desired point in the rotary cycle.

Specifications

Power	120 VAC	220 VAC
Motor Power	6W	6W
Rated Current	0.3A	0.15A
Standard Time / Torque	15 sec. / 18 Nm	
Optional Time / Torque	2 sec. / 9 Nm	
Insulating Resistance	100MΩ / 500VDC	
Withstand Voltage	1500VAC, one minute	
Protection Class	IP-67	
Ambient Temp.	-30° C ~ 60° C	
Fuse	1A	



Ordering Information

Part No.	Power	Ball Valve Materials	Connection Size
CBVE-120-M-3/4NPT	120VAC 50/60Hz	Carbon steel body, Monel ball & stem	3/4" FPT
CBVE-120-M-1NPT	120VAC 50/60Hz	Carbon steel body, Monel ball & stem	1" FPT
CBVE-240-M-3/4NPT	220VAC 50/60Hz	Carbon steel body, Monel ball & stem	3/4" FPT
CBVE-240-M-1NPT	220VAC 50/60Hz	Carbon steel body, Monel ball & stem	1" FPT

**Wiring Diagram:
(120 & 220 VAC)**

