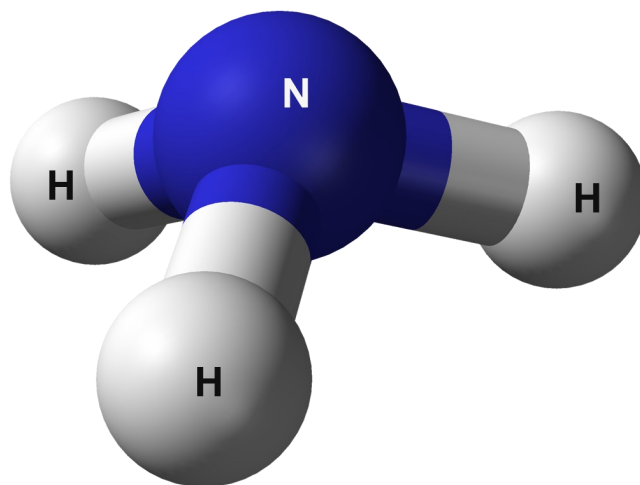


Hydro Instruments has been manufacturing vacuum gas feed equipment since 1978. In addition to Chlorine and Sulfur Dioxide gas feeders, we offer a complete range of products for feeding Ammonia gas.

The Hydro Instruments ammonia gas feeding equipment is essentially the same as the chlorine gas equipment. However, certain parts used in ammonia equipment are constructed of different materials for optimum chemical resistance.

## Line of Products

- Vacuum Feed Equipment
- Direct Injection Feed Equipment
- Automatic Feed Control Valves
- Ammonia Gas Pressure Manifolds
- Gas Leak Detectors
- Ammonia Gas Hoses & Yokes
- Diaphragm Protected Pressure & Vacuum Gauges
- Pressure Regulating Valves
- Corp. Stop Assemblies & Injection Quills
- Total Chlorine Residual Analyzers

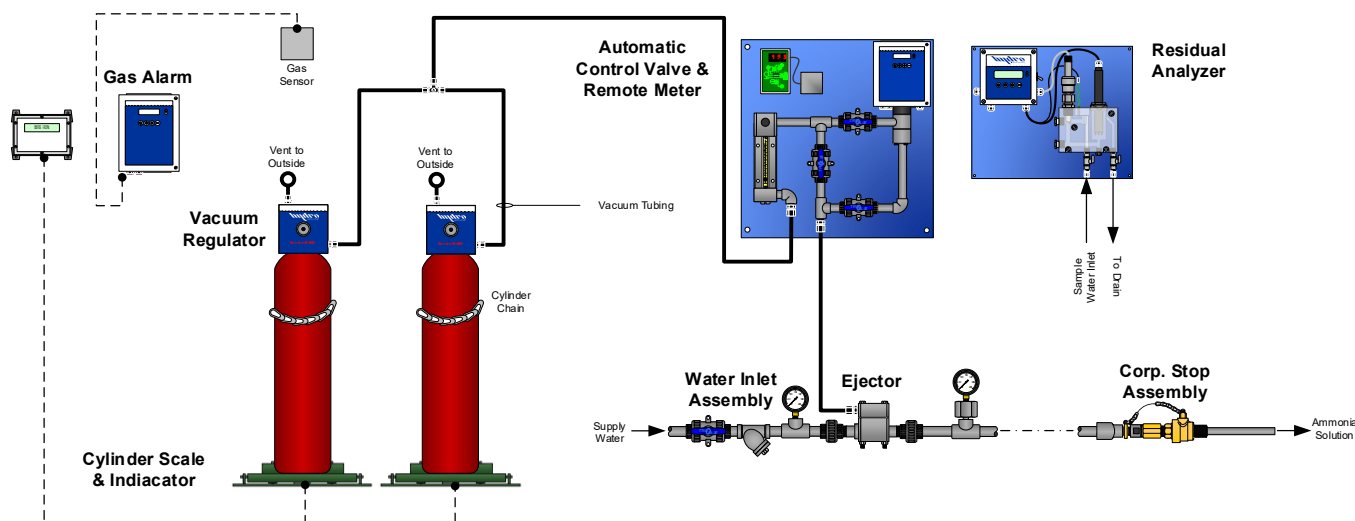


## Quality

With solid machined parts, only the finest materials and the most innovative designs, our line of gas feed systems and related instrumentation is the highest quality available.

## Systems & Equipment

Hydro Instruments offers a complete line of equipment for both ammonia vacuum feed and direct injection (pressure feed) systems.



## Ammonia Gas Feed Equipment

### Vacuum Feed Equipment

- Full range of equipment: Vacuum regulators, Switchover modules, Remote meters and Ejectors
- Up to 5,000 PPD (100 Kg/h) Ammonia feed capacity

### Direct Injection Feed Equipment

- Ammonia gas is fed to the injection point under pressure.
- Up to 500 PPD (10 Kg/h) Ammonia feed capacity

All ammonia gas feed equipment is constructed of materials specifically for feeding ammonia gas.



## Automatic Control Valves

### Omni-Valve, Series 110 & Series 1000

- Linear motion with precise control for minimal wear and long life
- Maximum versatility

### Control Valve, Series 230

- Linear motion with precise control for minimal wear and long life
- Economical



## Gas Alarms

### GA-180 Gas Alarm

- Up to 16 gas sensors in any combination
- Optional battery backup and/or temperature monitoring
- Integral 90dB horn

### GA-171 Gas Alarm

- Up to 2 gas sensors in any combination
- Economical



## Residual Analyzers

### RAH-210 & RAH-280 Residual Chlorine Analyzer

- Amperometric (continuous online measurement) for Total Chlorine

### RPH-250 & RPH-260 Residual Chlorine Analyzer

- Amperometric (continuous online measurement) for Total Chlorine
- Fast and easy maintenance
- Reagentless



## Accessories

### Ammonia Gas Manifolds

- Vertical and Horizontal layouts
- Up to 4 cylinder connections or a single bulk tank connection

### Pressure Regulating Valve, PRV-71H

- Manual or Electrically Actuated
- Up to 8,000 PPD (160 Kg/h) Ammonia feed capacity

### Injection—Corporation Stop Assemblies

- Various sizes and materials available

